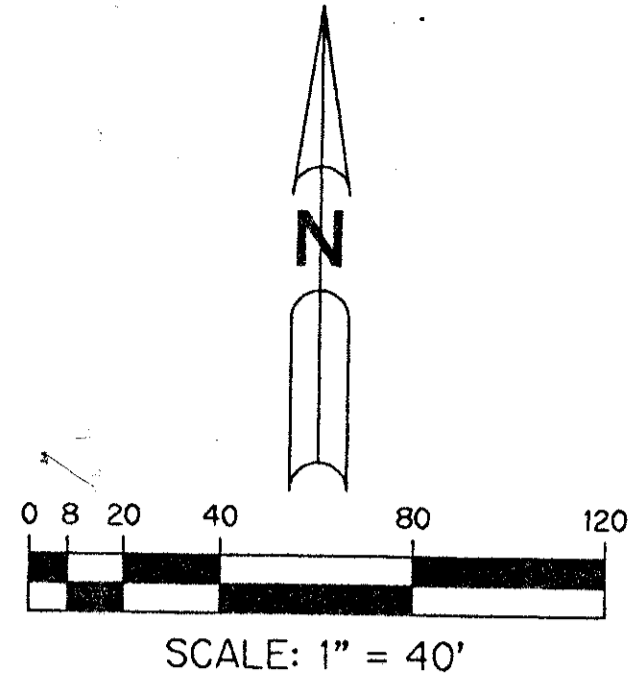


KEY MAP
N.T.S.



RAINBOW LAKES TRACT A - ONE

BEING A REPLAT OF LOTS 43, 44 AND 45, RAINBOW LAKES - TRACT "A", AS RECORDED IN PLAT BOOK 64, PAGES 113 THROUGH 118 INCLUSIVE AND TRACTS 5 THROUGH 8 INCLUSIVE AND TRACTS 17 THROUGH 20 INCLUSIVE OF BOYNTON GARDENS, AS RECORDED IN PLAT BOOK 6, PAGE 32 AND THOSE RIGHTS OF WAYS ABANDONED PER O.R.B. 991, PAGE 305 AND O.R.B. PAGE LYING IN SECTION 23, TOWNSHIP 45 SOUTH, RANGE 42 EAST
PALM BEACH COUNTY, FLORIDA

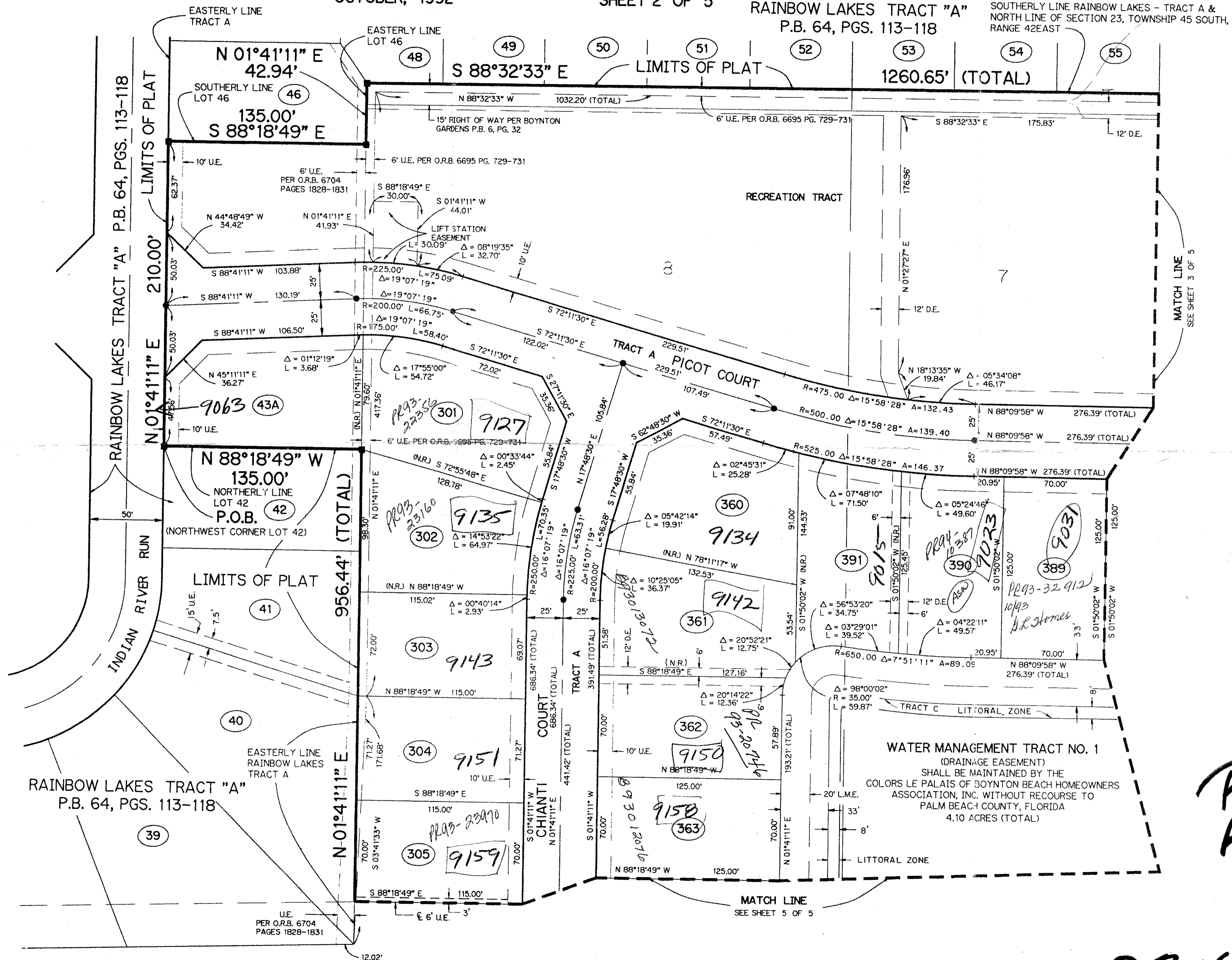
OCTOBER, 1992

SHEET 2 OF 5

RAINBOW LAKES TRACT "A"
P.B. 64, PGS. 113-118

SOUTHERLY LINE RAINBOW LAKES - TRACT A & NORTH LINE OF SECTION 23, TOWNSHIP 45 SOUTH, RANGE 42 EAST

191



PET. 79-177D
ALOC. #0001
5/2/2/E
(TRACT F)

THIS INSTRUMENT PREPARED BY
LEO E. NOBLE P.L.S. 3143 STATE OF FLORIDA
LAWSON, NOBLE AND ASSOCIATES, INC.
ENGINEERS PLANNERS SURVEYORS
WEST PALM BEACH, FLORIDA

TARTAN LAKES TRACT L-3
(EXISTING LAKE)
P.B. 51, PG. 170

RAINBOW LAKES TRACT A-ONE 70/191

0316-012

PAGE 191
FLOOD MAP # 190B
ZONING RTS
ZIP CODE 33437
BOOK 10
FLOOD ZONE B
QUAD # 35
SE
PLD NAME same
22195-192

TXZ = 441